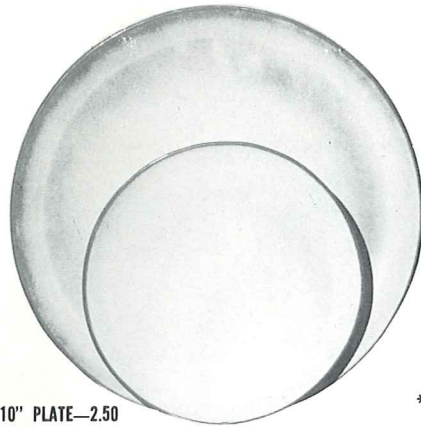




*4K—BUTTER DISH—3.00



6F—10" PLATE—2.50

6G—7" PLATE—1.50



*6B—SUGAR WITH LID—2.25



*6A—9 OZ. CREAMER—1.75



*6V—2 1/2 QT. BAKER—6.00



**6C—CUP—1.35

6E—5" WELLED SAUCER—1.25



*6H—SALT & PEPPER—2.00



*5LC—6 OZ. JUICE—1.25



*5L—12 OZ. TUMBLER—1.50



*6VS—1 1/2 QT. BAKER—4.50



*6T—6 CUP TEAPOT—4.00



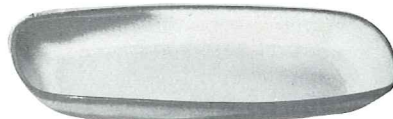
*81—1 QT. PITCHER—3.00



*80—2 QT. PITCHER—4.50



*6U—18 OZ. BAKER FOR TWO—3.00
A COVERED CANDY DISH



*5QS—13" STEAK PLATE (SHALLOW PLATTER)—2.50

*6P—11" STEAK PLATE—2.00

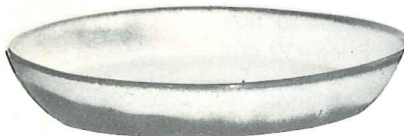
*5PS—9" TRAY—1.50



*6J—2 CUP TEAPOT—2.50



*6S—TWO SPOUT GRAVY—2.50



*91—10" BAKING DISH—2.50



*BP—6 OZ. BEAN POT
OR CUSTARD—1.00

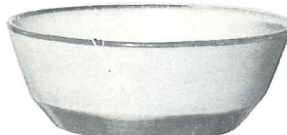


*BP—6 OZ. BEAN POT
OR CUSTARD/WITH LID—1.75

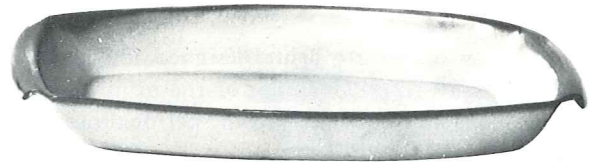


**6X—14 OZ. CHILI SOUP—1.25

6XS—10 OZ. FRUIT—1.00

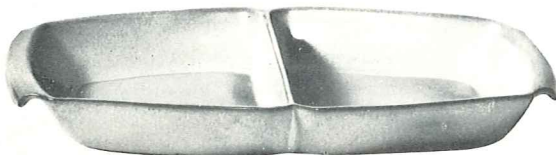


*6N—1 QT. BOWL—2.00

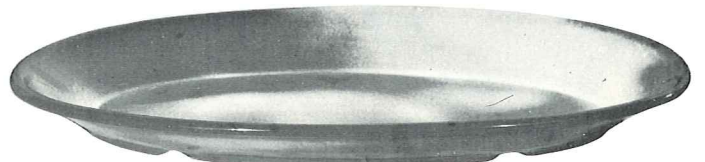


5P—17" DEEP PLATTER—8.50

*5Q—13" DEEP PLATTER—3.50



*5QD—13" DIVIDED BOWL—3.50



*TP—17" OVAL PLATTER—8.50

THIS PAGE AVAILABLE IN PRAIRIE GREEN, WOODLAND MOSS AND WHITE SAND EXCEPT WHERE NOTED *

* AVAILABLE IN ALL COLORS ** AVAILABLE IN BLACK & FLAME ALSO. — ADD 50% FOR FLAME

SIZES ARE APPROXIMATE AND MAY VARY SLIGHTLY.